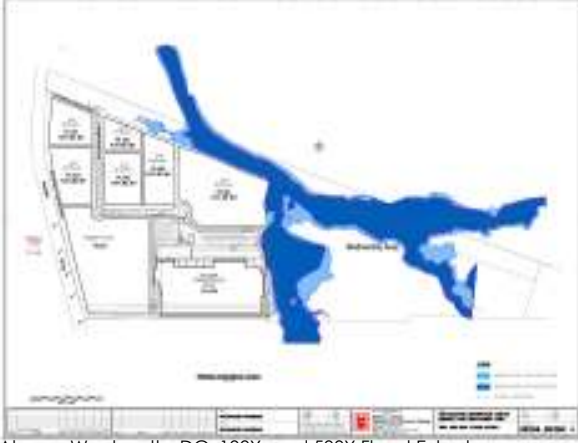
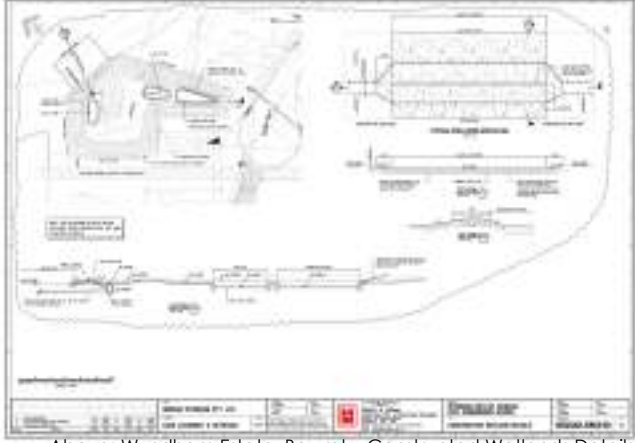


FOCUS ON
WATER INDUSTRY

The partnership of **Henry & Hymas** was formed in 1985 and to date has acted on many thousands of projects, individually valued between \$500,000 & in excess of \$100 million. This work has been carried out in every state of Australia, in addition, commissions have been executed on behalf of Australian based companies for projects in **New Zealand, Singapore, Malaysia, Arab Emirates, Iran and Brunei**. The variety of expertise that **Henry & Hymas** provides to the construction industry is exemplified throughout the company website.



Above: Woolworths DC, 100Y and 500Y Flood Extent



Above: Wyndham Estate, Bowral - Constructed Wetlands Details



The following services summary is specific to the water industry:

- **Project Management**
- **Sewer/Stormwater Engineering & Mining**
- **Site Appraisals and Compliance Auditing**
- **Water & Wastewater Treatment Systems**
- **Building & Dilapidation Reports**
- **Coffer Dams & De-watering**
- **Environmental Planning & Issues Assessments**
- **Site Infrastructure Engineering**
- **Flood Studies**
- **Hydraulic & Process Engineering**
- **Civil, Structural & Electrical Engineering**
- **Budgetary & Tender Advice**
- **Water Harvesting & On-site Detention Systems**
- **Water Quality & Quantity Management**
- **Sediment & Erosion Control**
- **Construction Supervision**
- **GPTs, Bioretention & Wetland Systems**
- **Lifecycle Management**



HENRY & HYMAS

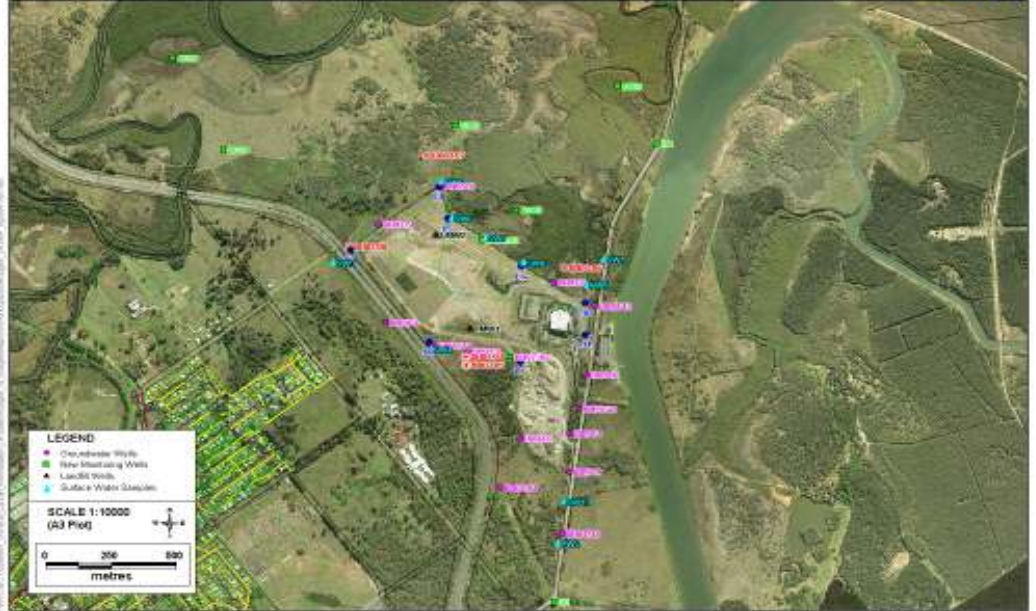


FOCUS ON WATER INDUSTRY

Right: Containerised leachate treatment systems
Below: Nudgee Landfill Environmental Monitoring



Nudgee Road Landfill



Nudgee Landfill Environmental Monitoring Plan

Henry & Hymas's specialist Water Cycle Management design capability includes:

- Rainwater harvesting and eco-flow conservation
- Rainwater storage and reuse
- Balancing techniques to economically size rainwater tanks
- Stormwater, grey water or black water treatment and/or reuse
- OSD's - including the incorporation of WSUD BMD's
- WSUD BMD's - bioretention, vegetated swales
- Buffer strips
- Constructed wetlands
- Bio swales
- Water quality modelling - MUSIC
- Flood studies - modelled using 12d and HEC-RAS
- Flood studies - with flood mitigation requirements
- Large pipe network modelling - using DRAINS and/or RAT HGL
- Flood studies - large catchment modelling with model calibration using XP RAFTS

Henry & Hymas have substantial proven track record Water & Wastewater Management. Following are a selection of relevant projects:

- Erskine Park - 60 ha Industrial Development; flood studies and water management.
- Bowral Retirement Village - design and documentation of sewer and water supply to Wyndam Estate.
- M7 Precinct - 150 ha Industrial Subdivision; coordination of utility services.
- Packaged MBR STP for Tenix Defence.
- Tipperary Station; sewer recovery and reuse.
- Various truck wash and recycling facilities.
- IMO Carwash Facilities; Nth Strathfield, Wyoming, Guilford & Penrith.
- Mulgoa Health Farm, Fern Hill Horse Stud Farm; STP.
- Castle Hill Country Club; sewer, stormwater and irrigation facilities.
- Glen Alpine Project; sewer and water main reticulation, stormwater and sewer recovery, dams, tanks reservoirs.
- Warnavale Town Centre and Residential Subdivision.
- Eastern Creek Stage 3 - Commercial Industrial Subdivision.
- Linton Retirement Village, Yass.



Right: SEPP 34 Estate Stormwater Masterplan

