



The partnership of **Henry & Hymas** was formed in 1985 and to date has acted on many thousands of projects, individually valued between \$500,000 & in excess of \$100 million. This work has been carried out in every state of Australia, in addition, commissions have been executed on behalf of Australian based companies for projects in **New Zealand, Singapore, Malaysia, Arab Emirates, Iran and Brunei.**



The variety of expertise that **Henry & Hymas** provides to the construction industry is exemplified throughout the company website. The following civil engineering services summary is specific to Subdivisions and Developments.

- **Project Management**
- **Dilapidation Reports**
- **Wastewater Treatment Systems**
- **Siteworks Developments**
- **Budgetary & Tender Advice**
- **Water Cycle Management**
- **Bulk Earthworks & Site Grading**
- **Sediment & Erosion Control,**
- **Authority Approvals**
- **Coffer Dams & De-watering**
- **Service & Utility Design**
- **Environmental Issues Assessments**
- **Structural & Hydraulic Engineering**
- **Carparking & Pavement Design**
- **Integrated Road & Drainage Works**
- **Construction Supervision**
- **Electrical & Comm. Design**
- **Shoring & Retaining Walls**
- **Water Harvesting**
- **Stormwater Management**
- **On-site Detention Systems**
- **Sewer Engineering**
- **Flood Studies**
- **3D Modelling**
- **Master Planning**
- **Feasibility Studies**
- **Bridges**

Below: Warnervale Town Centre



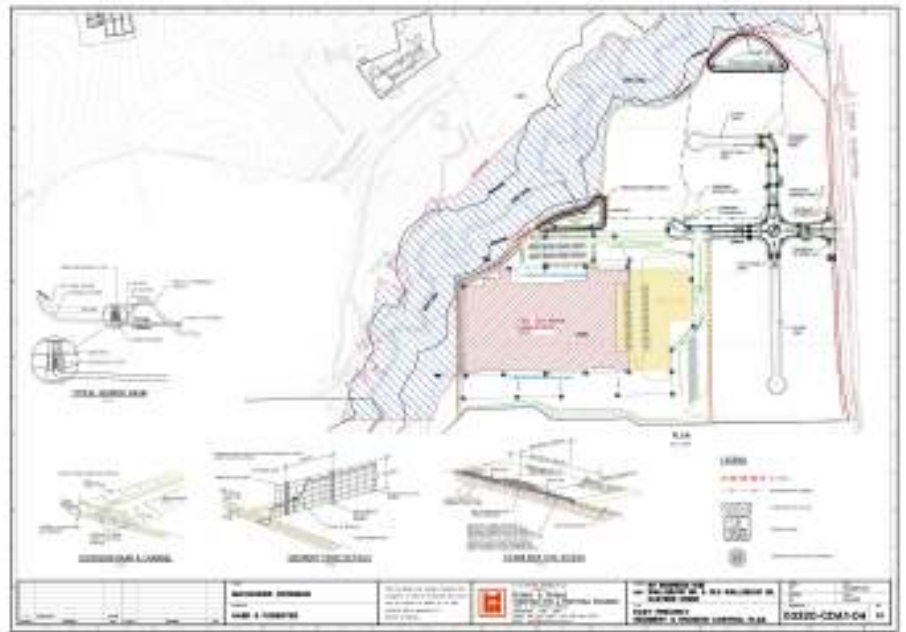
Above: Bulk Earthworks Plan  
Right: Site Plan/Road Layout



Below: \$60 million residential development, Hunters Hill, NSW



FOCUS ON  
**DEVELOPMENTS**



**Henry & Hymas** provides subdivision and developments solutions to major organisations including Australand, Macquarie Goodman, Stockland, ING, Mirvac, Orlani Property Group, Woolworths, Coles, Harvey Norman and Bunnings.

We are pleased to provide the following example project overviews:

- Henry & Hymas** is involved with the master planning, concept design and detailed design of the 60 ha industrial development at Mamre Road, Erskine Park for Macquarie Goodman. **H&H's** role includes assisting with the master planning, engineering reports, soil and water management, integrated roads & drainage design, detention basins design, retaining walls and service coordination. This development also involved continuous liaison with Local Government to comply with Council's Development Control Plan.
- H&H** is involved with the Warnervale Town Centre and Residential Subdivision located north of Wyong for Woolworths and Wyong City Council. This is an extension to an existing development in the vicinity, which includes a recently built school and proposed new railway station. Henry & Hymas has been engaged to closely liaise with the town planners, developers & authorities, provide complete road layout and bulk excavation platforms for the Town centre commercial areas have been prepared and include horizontal & vertical road alignment, platform bulk earthworks, earthworks calculation and stormwater management strategy. As this was part of master planning, to further assist the approval / decision making process for authorities and the developers, three dimensional visualization views and road drive through video have been produced.
- Henry & Hymas** was involved with the design of 87 retirement units and the associated infrastructure & community facilities. The Wyndham Estate Retirement Village development site is in Bowral in the Shire of Wingecarribee. **H&H** were engaged as both the Civil and Structural Engineers for this project. The Civil works included design and documentation of the roads, fire trails, stormwater, water, gas and sewer infrastructure, including a sewer pump station and rising main. The project also incorporated WSUD features such as a GPT, a constructed wetland and the provision of recycled water for use in toilet flushing & landscaping. Particular emphasis for the development was on the provision of disabled access, which limited grades within the site and posed interesting engineering challenges for setting floor levels and driveway grades. Our role also included liaising with Council and service authorities including the RTA.



**HENRY & HYMAS**



Level 5, 79 Victoria Avenue, Chatswood NSW 2067 Ph: (02) 9417 8400 Fax: (02) 9417 8337

Web: [www.henryandhymas.com.au](http://www.henryandhymas.com.au)